

## **PIPS A New Technology In Inductive Position Sensing**

Positek Limited L6 The Link Andoversford Industrial Estate Andoversford Cheltenham  
Gloucestershire GL54 4LB England  
Telephone (44) (0)1242 820027 Fax: (44) (0)1242 820615

### **Abstract**

With the increasing sophistication of electronic controls for mechanical systems to provide both accuracy and flexibility of control, there is more demand for durable, accurate and easy to use displacement sensors. Customers are increasingly concerned about reliability, durability and the associated replacement costs of sensors. They also want sensors that can be easily connected and mounted.

The market for displacement sensors covers an extensive range of technologies, each with their own accuracy capabilities, durability weaknesses and cost base. The range spans simple switching devices, such as limit switches and proximity devices, potentiometers, inductive sensors, LVDT's, capacitive, optical, magnetostrictive, hall effect, magnetoresistive and laser based devices.

Coil based sensors provide a good combination of robustness, durability, performance and cost. However, they have also traditionally been complex to install with multiple wiring connections and with separate electronic interfaces for maximum performance. Compared with a potentiometer they have also been quite expensive. Many sensor users would like to be able to purchase sensors with the life and durability of an LVDT but with the ease of use and cost of a potentiometer. The limiting factor has been the high cost of the electronic modules, special materials and the complexity of the coils.

The customer's requirement can now be more closely met by a new technology from Positek which is very simple and compact, offers high performance and can be produced at relatively low cost. The technology is based on inductive coils and features a unique micro electronic interface which provides excellent overall performance.

A range of devices has been developed using the new technology including both linear and rotary sensors. The range includes standard sensors with linear travels of 10mm to 1500mm and rotary displacements of 160°. For special applications in fluid power systems cylinder feed back sensors and miniature spool position sensors have been produced. The technology also has the capability of satisfying Intrinsic Safety and Explosion Proof requirements.

This paper will present this new technology which has won 2 Awards from the United Kingdom Government. The technology incorporates a novel patented technique for the high speed analogue signal processing which offers excellent performance with very simple mechanical construction. This paper describes the fundamental operating principles behind the technology and will also describe how the electronic interface was implemented as a custom integrated circuit. Some examples of products based on the technology including the levels of performance which can be achieved will be presented.

## PIPS A New Technology In Inductive Position Sensing

Positek Limited L6 The Link Andoversford Industrial Estate Andoversford Cheltenham Gloucestershire GL54 4LB England  
Telephone (44) (0)1242 820027 Fax: (44) (0)1242 820615

With many years' experience in the sensors and transducers market, particularly for the automotive and aerospace industries, the engineers at Positek wanted to be able to offer customers in the industrial market displacement sensors which were compact, robust and durable and available at reasonable cost.

The new PIPS technology has been developed by Positek after winning a prestigious Smart Award from the UK government. LIPS and RIPS are new transducers based on PIPS which can offer the advantages of a non contact inductive sensor but with the simplicity and cost effectiveness of potentiometers.

LIPS, linear position sensors and RIPS, the rotary versions, are totally self contained displacement sensors which provide a simple analogue output from a dc supply voltage. They require no separate signal conditioning and are designed to be exceptionally robust and easy to use. A variety of industry standard interfaces have been designed using a modular approach to simplify the mechanical and manufacturing construction and to provide customers with a high level of flexibility without high costs.

It was agreed at an early stage that sensors based on inductive principles offered the best potential compromise between robustness and performance. LVDT technology has proven itself in the industrial and aerospace markets even though it is based on old technology which has several disadvantages. The coil structures are large with very high turn counts of delicate wire and the overall length is up to three times the travel. This adds cost and makes installation difficult. Also, in order to achieve the best performance, the interface electronics unit is often large and bulky, and has to be mounted independently of the sensor. Furthermore in order to achieve good temperature stability, the electronic modules must be matched to the sensors making the installation even more complex.

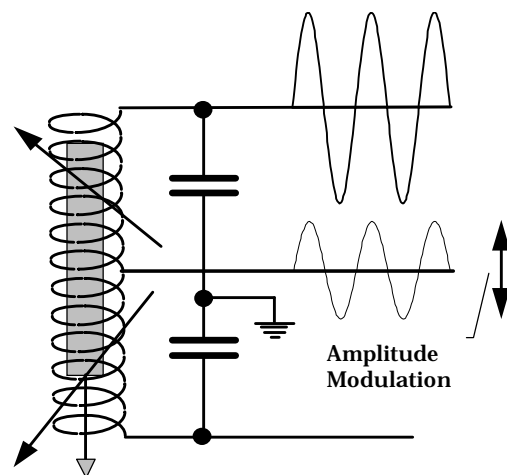
The primary aim was therefore to develop a new technology which would overcome these difficulties and yet retain the advantages and customer acceptance of inductive technology. In addition it was felt that a sensor should be a totally self contained unit allowing the customer

to install the sensor easily and to interface it with his control or monitoring system.

### THE NEW TECHNOLOGY PIPS (POSITEK'S INDUCTIVE POSITION SENSORS)

The new PIPS sensors use a primary sensing element which is a variable inductive coil arranged in a simple half bridge. A full bridge resonant circuit is created by coupling two capacitors across the coil. With the circuit driven into resonance by an oscillator, the output is taken from the centre tapping. As the relative inductance of the two arms of the bridge is varied the peak voltage of the output signal is modulated, see Figure 1. This is a fundamentally well understood principle.

Figure 1  
The Basic Sensor Circuit and Signals



The PIPS coil is, however, very different to other inductive sensors in that it uses a coil with very few turns of wire, typically 100 turns. In a linear sensor the coils are wound on a former with standard enamelled copper wire. In rotary sensors the coil is produced using standard printed circuit board manufacturing techniques.

The result is that the coil can be very compact and is very robust. It is possible to produce linear sensors with coils of only 1.5 mm diameter. With only a few turns the coil has a very low inductance and with appropriate capacitor values the natural frequency of oscillation of the LC circuit is set in the order of 1 to 2 MHz. The frequency is not specifically

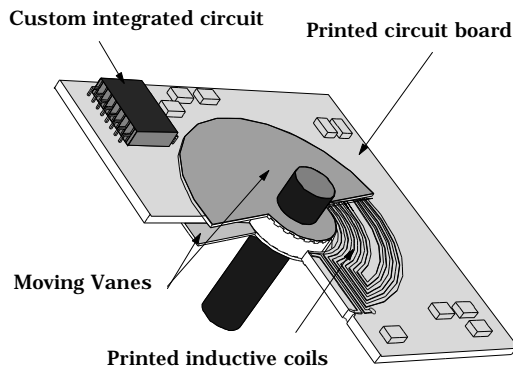




durability. The construction of the RIPS sensor is shown in figure 4.

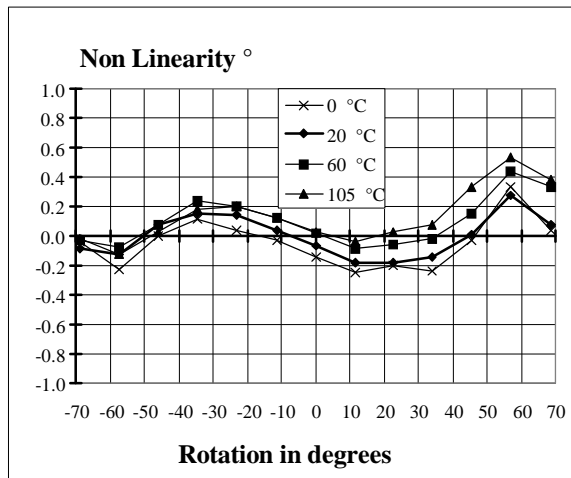
The coils are produced using standard printed circuit board techniques and the target which affects the inductance of the coils is made up of a pair of semicircular vanes which are mounted either side of the printed circuit board. The coil structure on the printed circuit board is designed to produce optimal linearity over a large angle. At the present time is possible to achieve good linearity of +/- 1% over 140° and it is expected that in the near future this will be nearly 360°. Over reduced angles the linearity is improved.

**Figure 4**  
RIPS Rotary Sensor- Construction



The vanes are spaced equally from the coil board and are mounted onto the sensor input shaft. In the design special effort has been made to eliminate costly end thrust bearing arrangements and in the case of RIPS the tough printed circuit board takes all the end thrust. Control of the input shaft is achieved using either plain or sealed ball race bearings.

**Figure 5**  
RIPS Rotary Sensor- Performance



The RIPS sensors produce excellent performance over a wide temperature range. Linearity is very consistent between units over a wide angle because of the manufacturing technique employed. The performance of the RIPS sensor is shown in figure 5

### LINEAR SENSORS

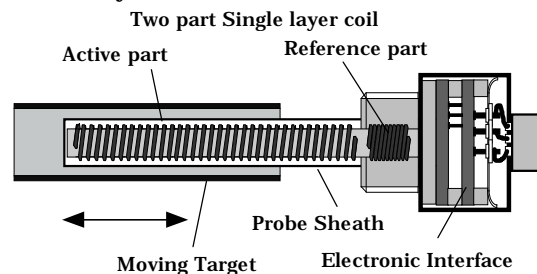
A variety of Linear sensors have been produced based on the PIPS technology. Because of the simple coils considerable flexibility is possible in the construction of the sensor.

The flexibility of the coil design and the lack of special target materials creates interesting possibilities for designing sensors integrally within machinery such that the actual component can be sensed directly. This often eliminates several components and simplifies the installation of the sensor for OEM designs. An example is within a brake servo system where the position of the servo piston must be known. A LIPS sensor can be applied to measure the piston directly without interfering with the mechanical linkage from the pedal to the piston.

### CYLINDER LIPS

These sensors are designed for use in fluid power applications in hydraulic and pneumatic cylinders and where environmental conditions dictate a fully sealed assembly such as internal gearbox controls. These sensors are designed with a coil wound on a stiff fibreglass or carbon fibre core and sheathed with a high performance polymer which gives exceptional fluid resistance. The coil and sheath are epoxy filled to produce a robust and pressure insensitive assembly. The basic construction of the sensor is as shown in Figure 6.

**Figure 6**  
Cylinder LIPS - Construction



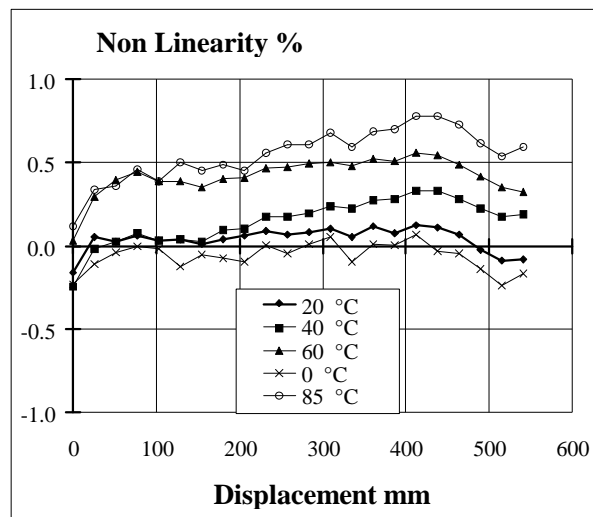
The coil is wound in a single layer with a coarse helix and the pitch of the helix is controlled to give a linear response. In linear sensors the ratio of the overall length to the travel is important. With LIPS sensors this

ratio can be almost 1:1 since it is configured with only half of the bridge circuit active. The active coil is wound over the length of the probe whilst the other half of the bridge is a very short reference coil. In some cases this can be a commercial inductor mounted with the electronics but for optimum performance good material and temperature matching is achieved with a wound reference coil.

The finished probe has an overall diameter of 6.4 mm and the small size of the probe makes it particularly suitable for pneumatic applications where piston sizes can be smaller. The sensors have been successfully applied to a wide range of control applications including ship stabilisers, water jet propulsion systems and high performance car suspension systems as well as many industrial process control applications in severe environments.

Sensors with travels of between 4 mm and at least 600 mm can be accommodated with this design.

**Figure 6** Cylinder Lips - Absolute Performance

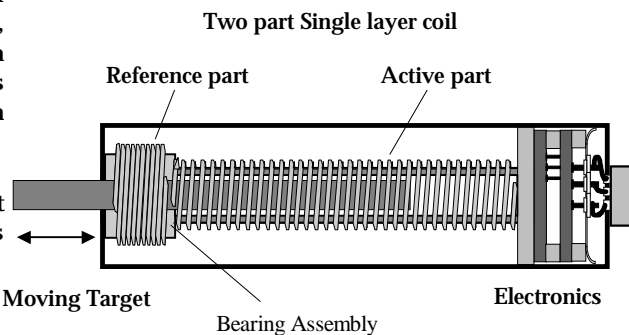


Standard levels of linearity of 0.25% can be produced with ease. By fine tuning the winding profile good linearity can be achieved over almost the full length of the active coil. Figure 7 shows the typical performance which can be achieved. For this sensor the coil is only 10 mm longer than the calibrated travel. Temperature stability is excellent over a wide range. The sensor will produce a total absolute error of less than 1% over 0°C to 80°C.

## SERIES 101 AND 103 STAND ALONE SENSORS

These sensors use an external coil with an internal pushrod as the target. The sensors are provided with an integral bearing assembly and has a short reference coil mounted over the bearing section with the active coil spaced along the majority of the sensor. The general construction is shown in Figure 8.

**Figure 8** LIPS 101 and 103 - Construction

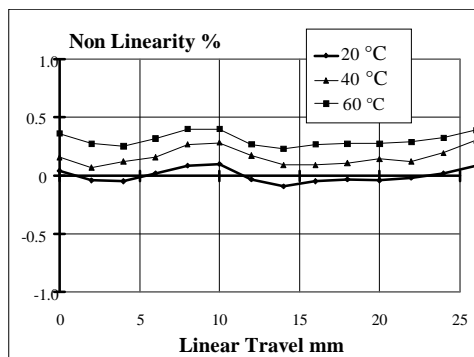


The electronics are mounted in the end of the sensor and the whole assembly is mounted in a very robust stainless steel housing tube

The performance of the series 101 and 103 sensors is similar to the Cylinder LIPS type. The performance of a 25 mm stroke P101 type is shown in Figure 9.

The sensors can be produced with travels up to 1500 mm and are available with a number of options. . The sensor can be supplied with rod end fittings or with body clamps and front flange mountings

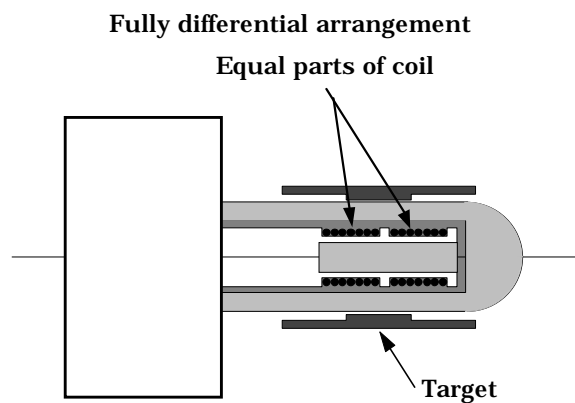
**Figure 9** P101 LIPS - Absolute Performance



## MINIATURE AND CUSTOM SENSORS

One of the major advantages of the PIPS technology is the very small coil size which is required. This leads to a significant and exciting capability of the new LIPS technology in its ability to produce extremely small sensors for measuring short travels of up to 10 mm. The sensor coil is fully differential and has a diameter of only 2.6 mm. The housing for the coil is a ceramic or plastic tube which has an outside diameter of 4 mm. The sensors uses an external concentric tube as the target.

Figure 9  
Miniature LIPS - Construction



In the Miniature LIPS sensors the construction is similar to the Cylinder LIPS except that the coil is constructed in two identical parts. In the mid travel position the target covers half of each coil. This gives a fully balanced situation which improves temperature stability at this position.

## CONCLUSIONS

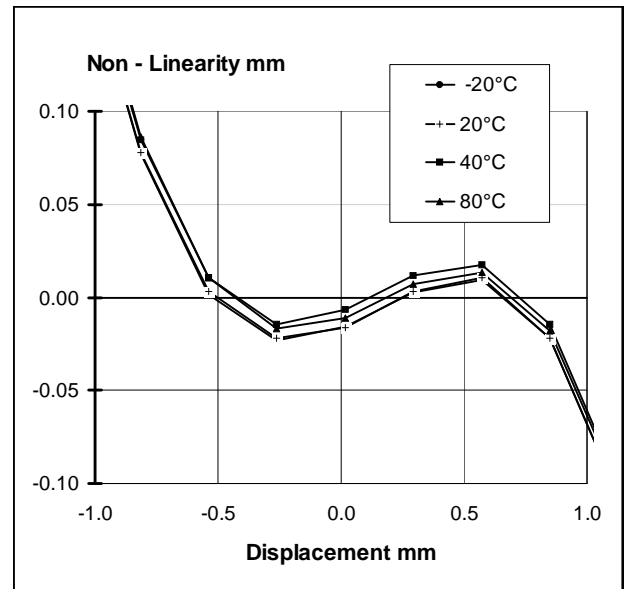
A new position sensor technology has been developed which has been successfully applied to a range of displacement transducers. The technology can be applied to sensors which can measure both linear and rotary movements. The new sensors have the advantages of small size and a unique miniature electronic interface which is integrally mounted within the sensor. The sensor performance is excellent and the nature of its operation gives it very good stability with temperature changes. The construction of the sensors is simple and robust which gives good durability and reliability in service.

RIPS is a rotary sensor which can provide exceptional durability for limited angle applications.

LIPS sensors are a range of devices which can be applied to stand alone applications for travels of 1 mm to 600 mm and for fluid power applications.

Applications for the miniature series of sensors include positional feedback in proportional and servo valves. The outline of a sensor with a 2 mm travel is shown in Figure 10.

Figure 10  
Miniature LIPS - Absolute Performance



The performance of the sensor is shown in Figure 11. The linearity of the sensor is within 1% for a travel of 1 mm close to the mid point of the coil. The temperature stability of the sensor at this point is excellent with a drift of less than 10  $\mu$ m for a temperature change of 50°C.